



Assembly Manual

6" -wheel Rollator
Model #: Territory Walker

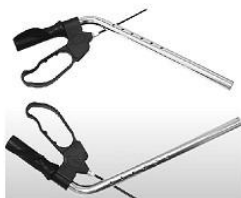
1 Check all parts:



Backrest



Screw set



Handle Bars

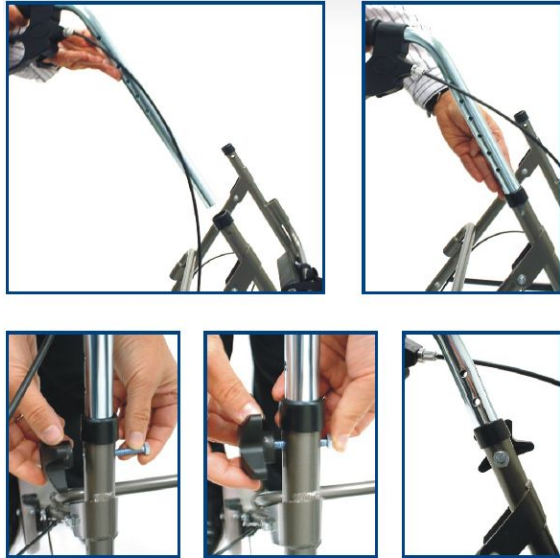


Main Frame

2 Unfolding the frame .



3 Installing handle bars.



4 Installing backrest.



Warning!

Max weight capacity is 300 lbs(136 kg).

Make sure that ALL wheels are in contact with the ground at ALL times.

Make sure that the brakes are locked BEFORE sitting down on the seat. When sitting down on rollator, DO NOT lean to one side or the other. Be sure to distribute your weight evenly at all times.

The rollator is NOT a wheelchair! DO NOT advance while sitting in the rollator. Never use stairs escalators while using rollator.