

Aluminium 4-Wheeled Rollator



Usage and Maintenance Instructions

CE

Model :RG 4401

**N.B. This equipment must be installed by a competent person.
Do not exceed the weight limit stated - doing so could put the user at risk.
120KGS WEIGHT LIMIT.**

BEFORE USE

- Carefully remove all packaging. Avoid using any knives or other sharp instruments as this may damage the surface of the product.
- Check the product for any visible damage. If you see any damage or suspect a fault, do not use your product, but contact your supplier for support.

INTENDED USE

Your Rollator has been designed to assist you when walking and carrying small items of shopping using the bag provided. The bag was designed specifically to fit your rollator, please only use the bag supplied for your Rollator. Do not use or combine bags and/ or baskets from other manufacturers.

When not in use, you can simply fold the Redgumbrand Rollator and store away until you require it next. The range of rollators are designed to be used both inside and outside the home.

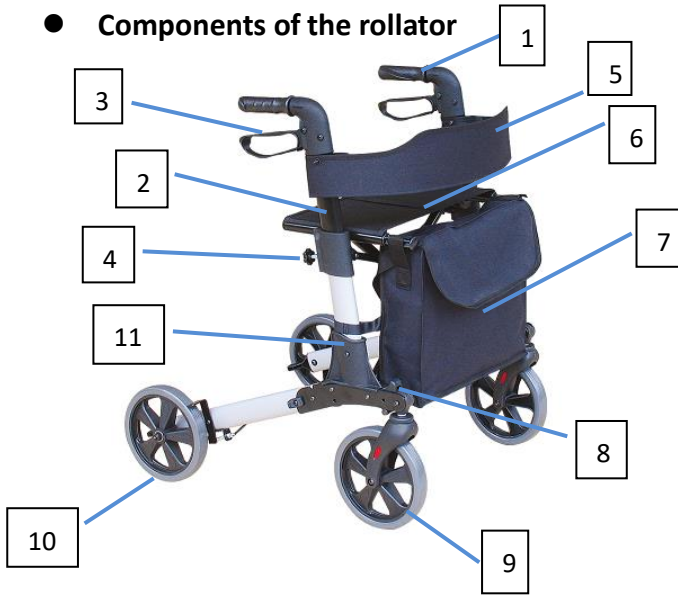
ASSEMBLY INSTRUCTIONS

Carefully remove all packaging, including the cardboard tubes covering the knurled tube part of the brake assembly. Check the product thoroughly for damage or obvious faults.



If you suspect the unit to be faulty, please do not use, but contact your supplier immediately for service.

● Components of the rollator



- 1、 Handgrip
- 2、 Adjustable tubing handgrip
- 3、 Brake lever
- 4、 rotary knob
- 5、 Backrest
- 6、 Seat
- 7、 Shopping basket
- 8、 Front wheel quick fold locking
- 9、 Front wheel
- 10、 Rear wheel
- 11、 Cane holder

● Assembly procedure:



Figure 1

Step 1:
 Rotate the front wheel downward to 180 degrees until hearing the 'click' sound. The front wheel is now unfolded.
 Press the button and rotate the front wheel upward to 180 degrees, The front wheel is now folded. (Figure 1)



Figure 1.1

Rotate the front wheel downward to 180 degrees until hearing the 'click' sound. The front wheel is now unfolded.
 Press the button and rotate the front wheel upward to 180 degrees, The front wheel is now folded. (Figure 1)

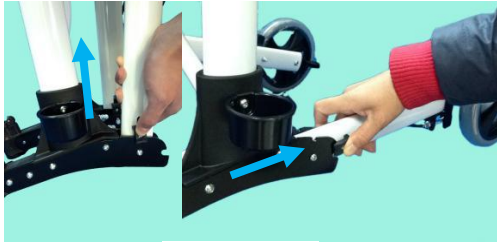


Figure 2

Step 2:

Turn the rotary knob clockwise, adjust the push handle up and down to the desired height, then to tighten the rotary knob clockwise, make sure the rotary knob is securely fastened.

Turn the rotary knob anti-clockwise, adjust the push handle up and down to the desired height, then to tighten the rotary knob clockwise, make sure the rotary knob is securely fastened.



Figure 3

Step 3:

Turn the rotary knob anti-clockwise, adjust the push handle up and down to the desired height, then to tighten the rotary knob clockwise, make sure the rotary knob is securely fastened. The push handle is now locked.



Figure 4

Step 4:

Turn the rotary knob clockwise, adjust the push handle up and down to the desired height, then to tighten the rotary knob clockwise, make sure the rotary knob is securely fastened.



Figure 5

Step 5:

Turn the rotary knob clockwise, adjust the push handle up and down to the desired height, then to tighten the rotary knob clockwise, make sure the rotary knob is securely fastened.

● UNFOLD / FOLD



Figure 6

Step 6:

Unfold the rollator by pressing down on both sides of the seat frame. (Figure 6)



Figure 7

Step 7:

To fold, pull seat upwards by the black handle on the seat plate as show in (Figure 7) . The rollator can now be folded completely.

OPERATING THE BRAKES



Figure 8

1. To stop, gently apply a gripping pressure to both brakes simultaneously (figure 8), this will slow down and stop your Rollator.



Figure 9

2. The brakes on your Rollator have a park option (figure 9). To operate the park option, push downwards on both brakes simultaneously. You will feel the brake make a very slight click. Your brakes are now in the 'lock' position.

3. To unlock, simply pull up the brake again, you will hear a slight click as the 'park' disengages.

BRAKE ADJUSTMENT

Your Rollator brake system will require periodic adjustment.

To adjust the brakes loosen Nut B and then screw/unscrew Nut A. When adjusted re-tighten Nut B. If further adjustment is required then loosen the Locking Screw and then using a pair of pliers pull the cable down by approximately a millimeter. Re-tighten Locking Screw. The brakes can then be adjusted further by loosening Nut B and screwing/unscrewing Nut A as before (Figure 9)

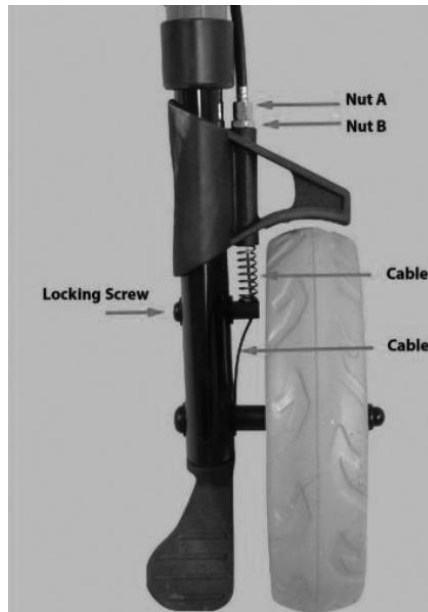


Figure 9

REISSUE

If you reissue or are about to reissue this product, please thoroughly check all components for their safety.

This includes:

- Bent or damaged tubes or cracks at the tube joints.
- Loose or worn horseshoe clips
- Elongated adjustment holes.
- Loose handles.
- Loose or worn Wheels and wheel fasteners (where fitted)
- Smooth, worn or split ferrules (rubber tips).

Replace all worn, missing or damaged parts where necessary. If in any

doubt, please do not issue or use, but immediately contact your

supplier for service support.

CARE AND MAINTENANCE & YOUR OBLIGATION

1. Only use your Rollator for the purpose for which it is intended, which is as an aid to walking. It is intended your rollator is only used on standard pavements or at home. It should not be used on rough terrain or pot-holed surfaces. The use of your rollator on these surfaces can seriously compromise your safety and may damage your rollator beyond repair.
2. Keep your Rollator clean by wiping down with a damp cloth with a mild detergent. Do not under any circumstances use an abrasive or solvent based cleaner, as this will seriously damage the rollator and void your warranty.
3. Wipe off all surfaces with a dry cloth and use a water dispersing agent such as WD40 on all metal joints.
4. Regularly check that all wheels and the folding mechanism function correctly and that all wheels move freely. Pay particular attention to the front wheels, ensuring that they rotate freely and without obstruction and that they are attached securely to the frame.



Withdraw your rollator immediately if any of the wheels become difficult to turn or do not feel securely attached to the frame or if you suspect damage or any other fault.

5. Monthly Checks - check that all locking pins are properly secure. Check that no components are loose. Check the adjustment to your brakes. Check castors.
6. Do not fit any parts or accessories to your rollator manufactured by another company. To do so will annul your warranty and may seriously compromise your safety.
7. We suggest that you check your rollator visually every day. However we recommend that you should have your rollator serviced every three months or less if used by, or issued to, various users.

CLEANING

Clean your rollator using a non-abrasive cleaner or mild detergent with a soft cloth. Abrasive cleaners e.g. AJAX and/ or abrasive cleaning pads may seriously damage the product beyond repair and should not be used. Always ensure that you wipe dry the equipment after cleaning.

MAINTENANCE

Please make a safety check of the product at regular intervals or if you have any concerns.

Manufacturers Warranty - 12 months against manufacturing defects.

Our goods come with guarantees that cannot be excluded under the Australian ConsumerLaw. You are entitled to a replacement part for a major failure and for compensation for any other reasonably foreseeable loss or damage. You are entitled to have the goods repaired or replaced if the goods fail to be of acceptable quality and failure does not amount to major failure.